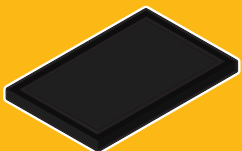


REC TWINPEAK 2 BLK2 SERIES

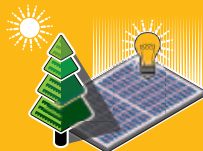
PREMIUM SOLAR PANELS WITH SUPERIOR PERFORMANCE

REC TwinPeak 2 BLK2 Series solar panels feature an innovative design with high panel efficiency and power output, enabling customers to get the most out of the space used for the installation.

Combined with industry-leading product quality and the reliability of a strong and established European brand, REC TwinPeak 2 BLK2 panels are ideal for residential rooftops worldwide.



**BLACK BACKSHEET FOR
IMPROVED AESTHETICS**



**IMPROVED PERFORMANCE IN
SHADED AREAS**

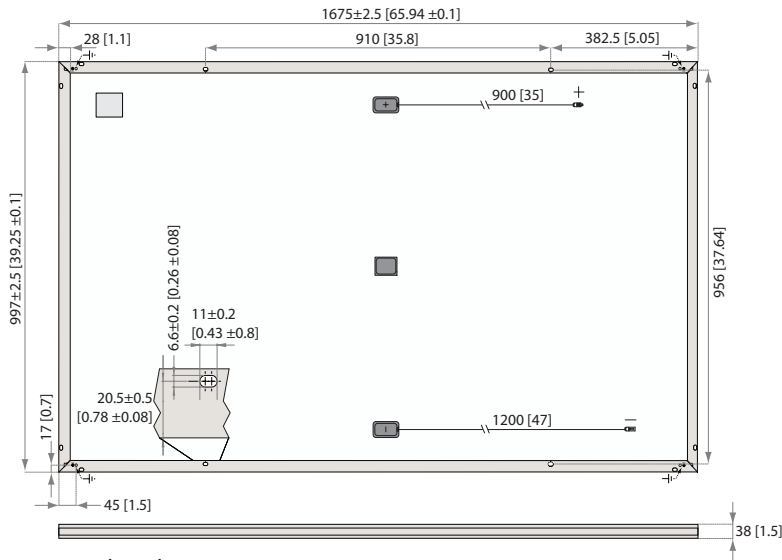


**100%
PID FREE**



**REDUCES BALANCE OF
SYSTEM COSTS**

REC TWINPEAK 2 BLK2 SERIES (RIE)



All measurements in mm [inches]

ELECTRICAL DATA @ STC	Product code: RECxxxTP2 BLK2		
Nominal Power - P_{MPP} (Wp)	275	280	285
Watt Class Sorting - (W)	0/+5	0/+5	0/+5
Nominal Power Voltage - V_{MPP} (V)	31.6	31.8	32.0
Nominal Power Current - I_{MPP} (A)	8.71	8.82	8.92
Open Circuit Voltage - V_{OC} (V)	38.2	38.4	38.6
Short Circuit Current - I_{SC} (A)	9.28	9.39	9.40
Panel Efficiency (%)	16.5	16.8	17.1

Values at standard test conditions STC (airmass AM 1.5, irradiance 1000 W/m², cell temperature 25°C).
At low irradiance of 200 W/m² (AM 1.5 and cell temperature 25°C) at least 95% of the STC panel efficiency will be achieved.
*xxx in the product code indicates the nominal power class (P_{MPP}) at STC as indicated above.

ELECTRICAL DATA @ NOCT	Product code: RECxxxTP2 BLK2		
Nominal Power - P_{MPP} (Wp)	203	206	210
Nominal Power Voltage - V_{MPP} (V)	29.1	29.3	29.5
Nominal Power Current - I_{MPP} (A)	6.96	7.04	7.13
Open Circuit Voltage - V_{OC} (V)	35.2	35.4	35.6
Short Circuit Current - I_{SC} (A)	7.52	7.51	7.59

Nominal operating cell temperature NOCT (800 W/m², AM 1.5, windspeed 1 m/s, ambient temperature 20°C).
*xxx in the product code indicates the nominal power class (P_{MPP}) at STC as indicated above.

CERTIFICATION

UL 1703, Fire classification Type 2; IEC 61215, IEC 61730, IEC 62804 (PID Free), IEC 61701 (Salt Mist Level 6), IEC 62716 (Ammonia Resistance), ISO 9001:2015, ISO 14001, OHSAS 18001

WARRANTY

10 year product warranty.
25 year linear power output warranty (max. degradation in performance of 0.7% p.a.).

17.1% EFFICIENCY
10 YEAR PRODUCT WARRANTY
25 YEAR LINEAR POWER OUTPUT WARRANTY

DUTY FREE
US IMPORT DUTY FREE

TEMPERATURE RATINGS

Nominal Operating Cell Temperature (NOCT)	44.6°C (±2°C)
Temperature Coefficient of P_{MPP}	-0.36 %/°C
Temperature Coefficient of V_{OC}	-0.30 %/°C
Temperature Coefficient of I_{SC}	0.066 %/°C

GENERAL DATA

Cell type:	120 REC HC multicrystalline 6 strings of 20 cells
Glass:	0.12" (3.2 mm) solar glass with anti-reflective surface treatment
Back sheet:	Highly resistant polyester polyolefin construction (black)
Frame:	Anodized aluminum (black)
Junction box:	IP67, 3-part with 3 bypass diodes 12 AWG (4 mm ²) PV wire, 35" + 47" (0.9 + 1.2 m)
Connectors:	Sträubli (Multi-Contact) PV-KBT4/PV-KST4 12 AWG (4 mm ²)

MAXIMUM RATINGS

Operational Temperature:	-40 ... +185°F (-40 - 85°C)
Maximum System Voltage:	1000 V
Design Load*:	(+) 75.2 lbs/ft ² (3600 Pa) (-) 33.4 lbs/ft ² (1600 Pa) *Refer to installation manual
Max Series Fuse Rating:	20 A
Max Reverse Current:	20 A

MECHANICAL DATA

Dimensions:	65.94 x 39.25 x 1.5 in (1675 x 997 x 38 mm)
Area:	17.98 ft ² (1.67 m ²)
Weight:	40.8 lbs (18.5 kg)

Note! All given specifications are subject to change without notice at any time.

Founded in Norway in 1996, REC is a leading vertically integrated solar energy company. Through integrated manufacturing from silicon to wafers, cells, high-quality panels and extending to solar solutions, REC provides the world with a reliable source of clean energy. REC's renowned product quality is supported by the lowest warranty claims rate in the industry. REC is a Bluestar Elkem company with headquarters in Norway and operational headquarters in Singapore. REC employs more than 2,000 people worldwide, producing 1.4 GW of solar panels annually.



www.recgroup.com